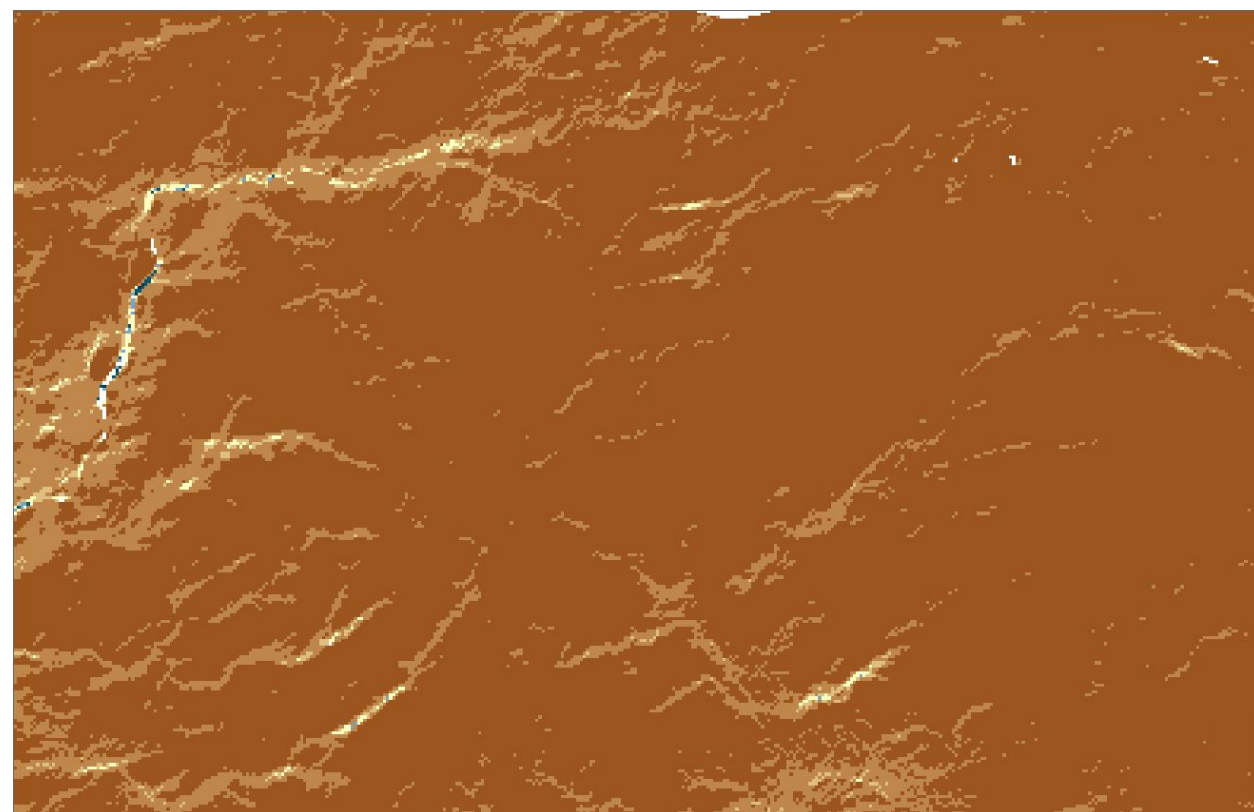
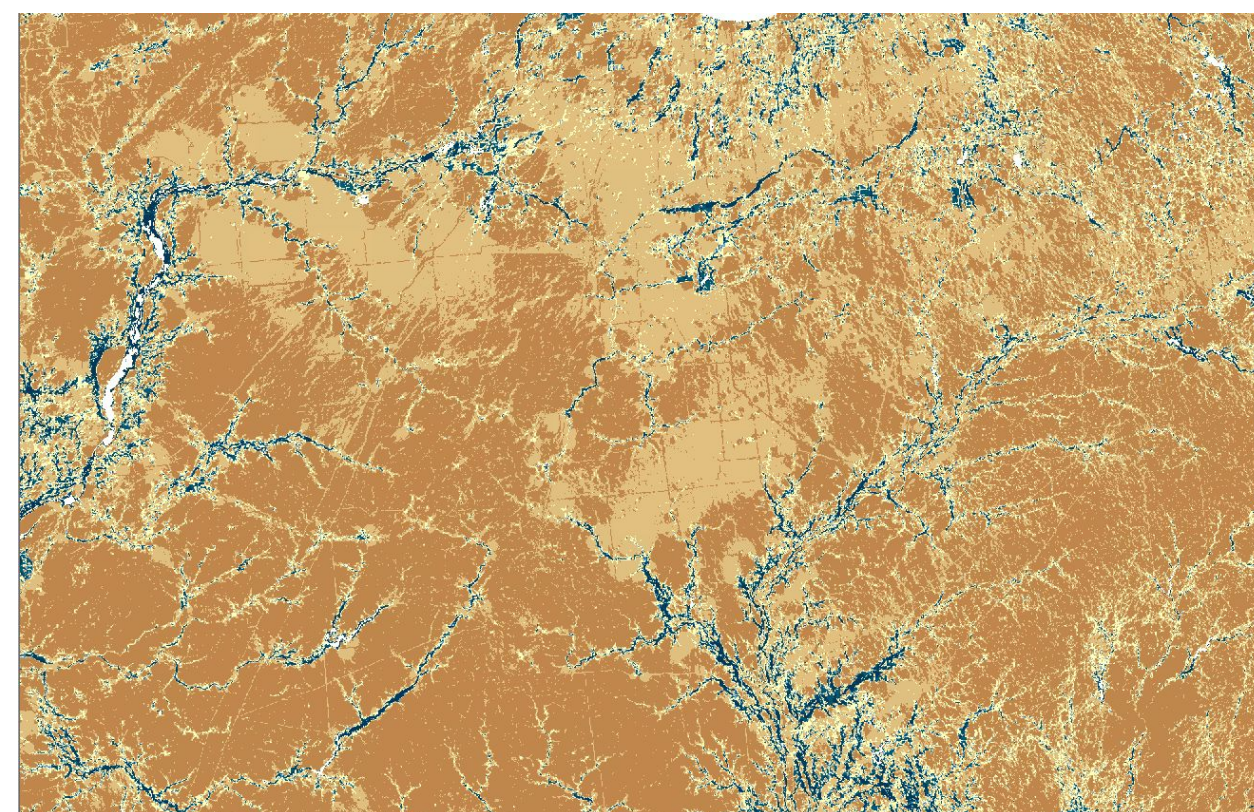


800 meters



180 meters



Anthropogenic Regional Flows

- Far above average ( $>2$  SD)
- Above average (1 to 2 SD)
- Slightly above average (0.5 to 1 SD)
- Average (0.5 to -0.5 SD)
- Slightly below average (-0.5 to -1 SD)
- Below average (-1 to -2 SD)
- Far below average ( $<-2$  SD)