

# A trait-based model to describe plant community dynamics in managed grasslands (GrasslandTraitSim.jl v1.0)

Synthesis project 72

Felix Nößler, Thibault Moulin, Oksana Buzhdygan,  
Britta Tietjen, and Felix May

# Overview

## Equation-based model

### State variables:

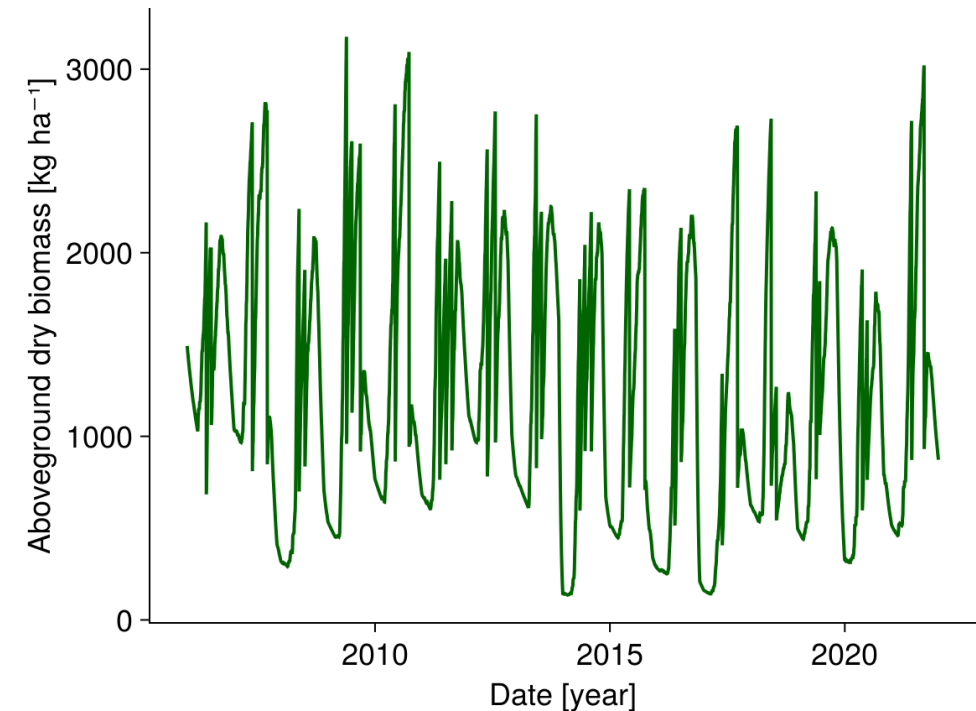
- Biomass of each plant functional type
- Soil water content

### Derived output:

- Community weighted mean traits over time
- (Functional) Diversity indices over time

Temporal resolution: daily

Spatial resolution: patch



# Traits are linked to processes

## Plant traits

- specific leaf area (SLA)
- root surface area per aboveground biomass (RSA)
- potential plant height (PH)
- arbuscular mycorrhizal colonisation rate (AMC)
- leaf biomass per total biomass (LMPM)
- leaf nitrogen content per leaf mass (LNCM)

Easier to measure

Transfer  
functions

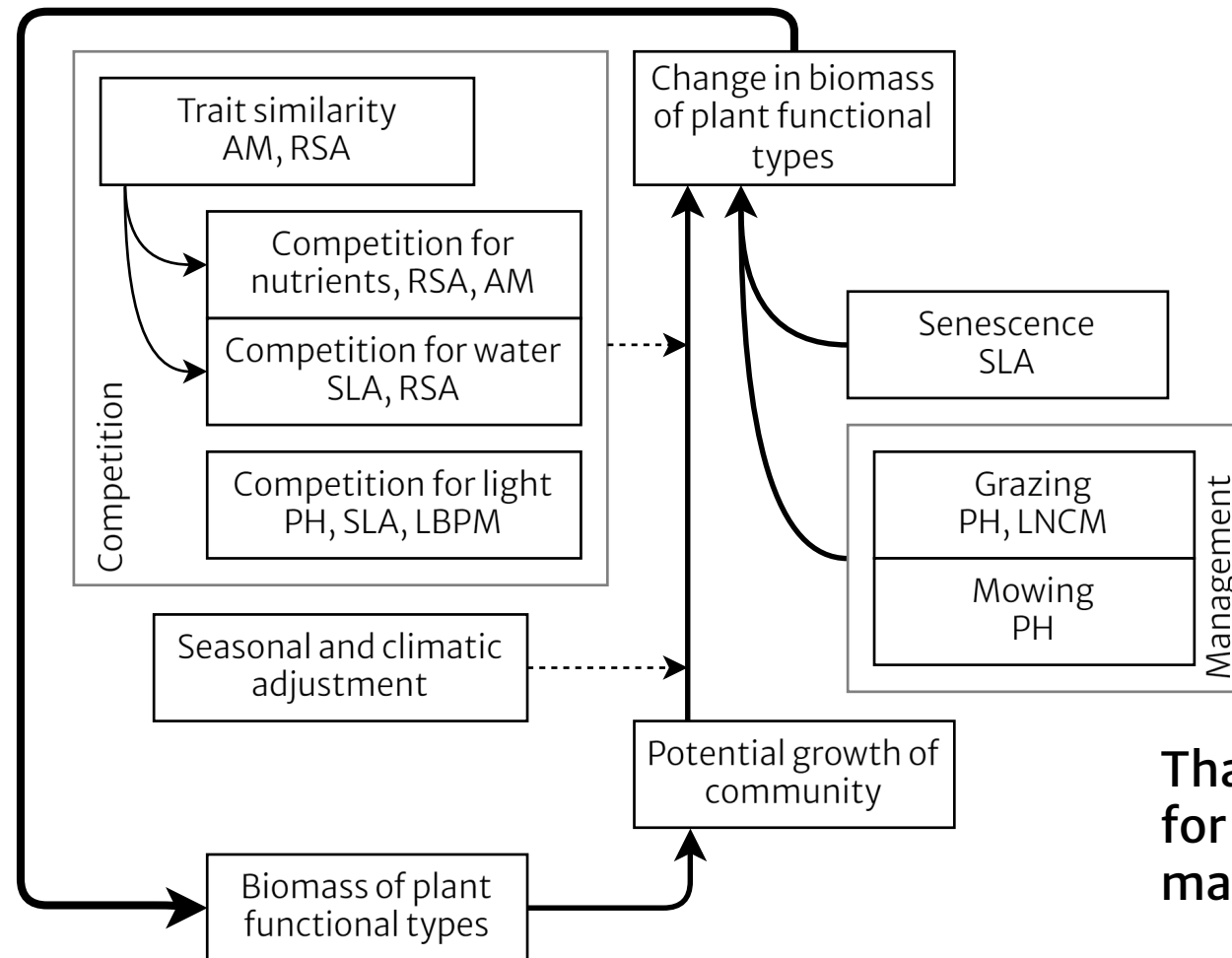
**Demographic rates,  
Response to management**

Hard to measure

Chalmandrier et al. (2021): Linking functional traits and demography to model species-rich communities.

# Biomass dynamics

Loop: day + 1



Thanks for all data contributors for trait, climatic, edaphic, and management inputs!

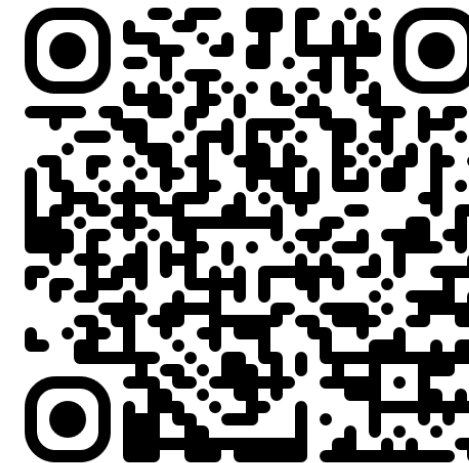
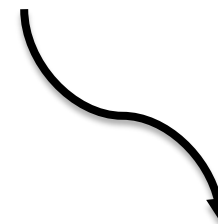
# Development

Open source software – Julia package:

<https://github.com/felixnoessler/GrasslandTraitSim.jl>

Documentation and tutorial:

<https://felixnoessler.github.io/GrasslandTraitSim.jl/>

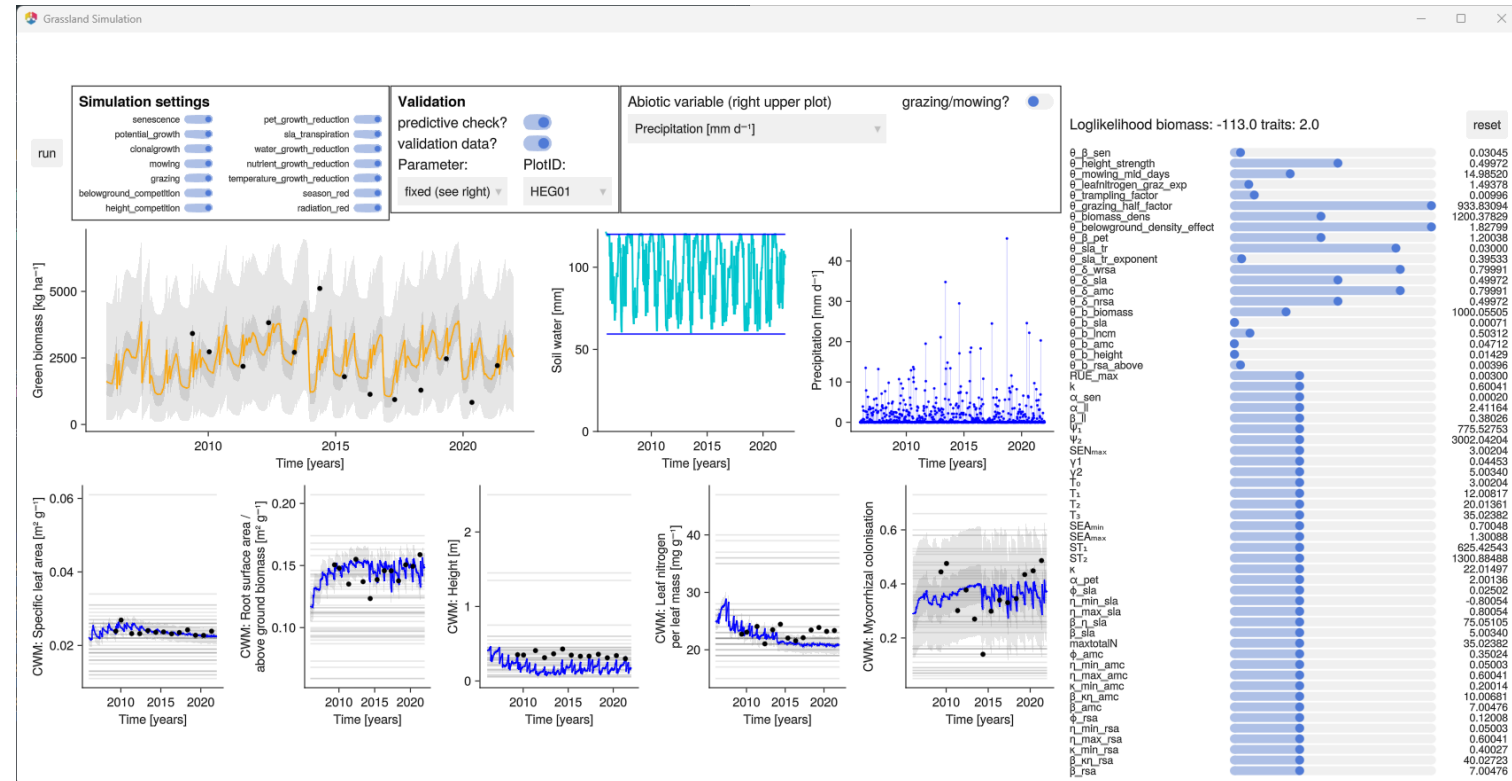


# Current steps

## Model calibration and validation

- Biomass
- Community weighted mean traits

Preparation of manuscript for journal  
Geoscientific model development  
until 04-2024



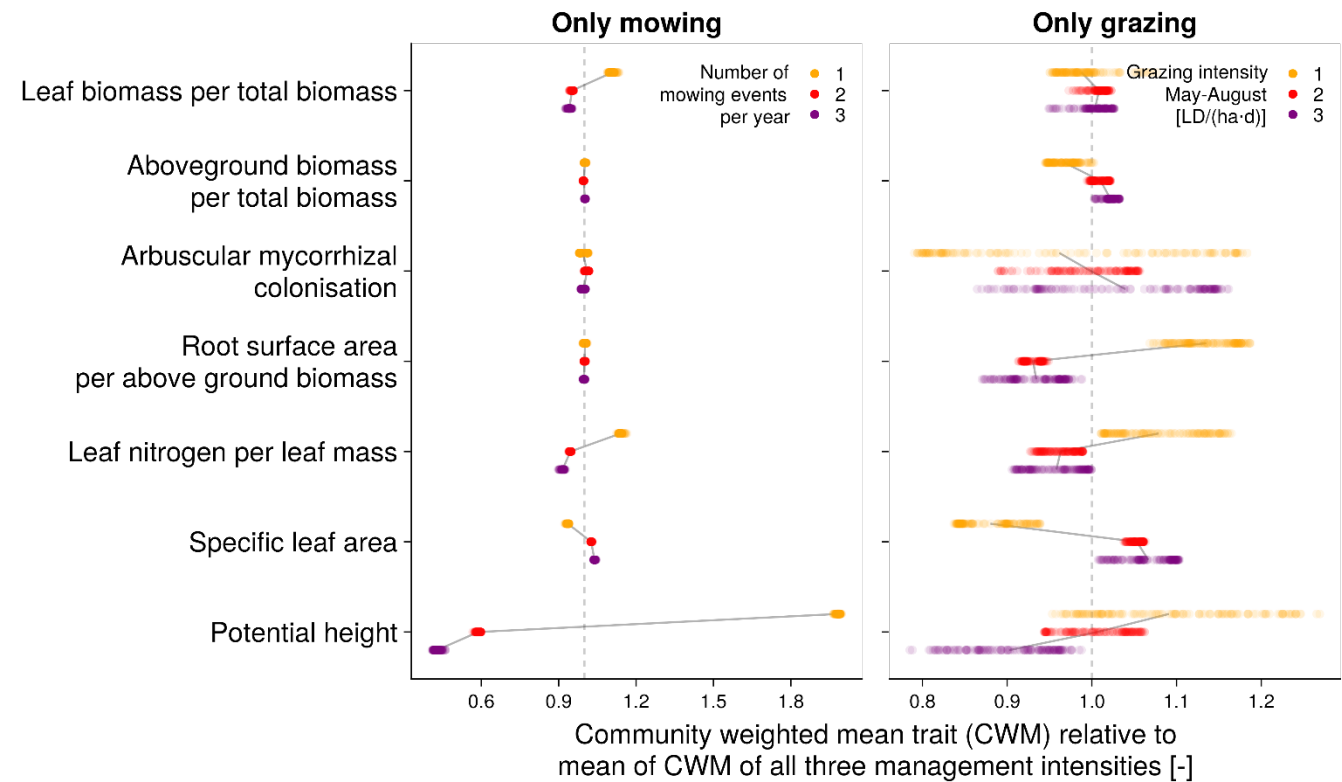
Thanks for all contributors for the validation data!

# Outlook

Do case studies with the model  
2024–2026

For example:

- Effects of mowing and grazing on plant community composition





Thanks for listening!

Cooperation with Sensing Biodiversity Across Scales (SEBAS),  
Anja Linstädter & Sophia Meyer

