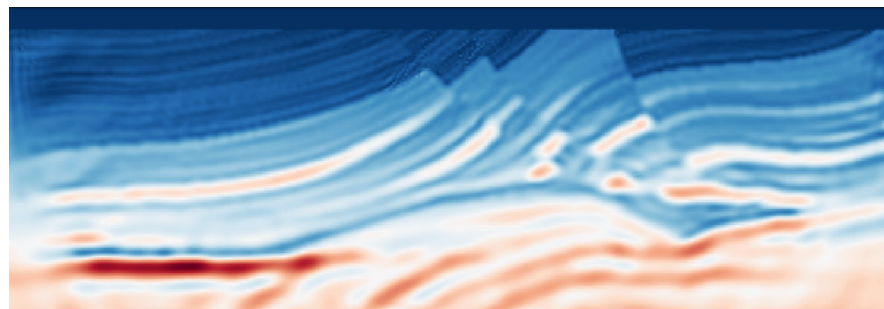


**Physical
Properties**



**Physical
Laws**

$$\begin{aligned}\rho \frac{\partial v_i}{\partial t} &= \sigma_{ij,j} + \rho f_i \\ \frac{\partial \sigma_{ij}}{\partial t} &= \lambda v_{k,k} + \mu(v_{i,j} + v_{j,i})\end{aligned}$$

**Predictions
(Observations)**



**Inverse
Modeling**

Optimal Control

Predictive Modeling

Discover Physics

Reduced Order Modeling

.....